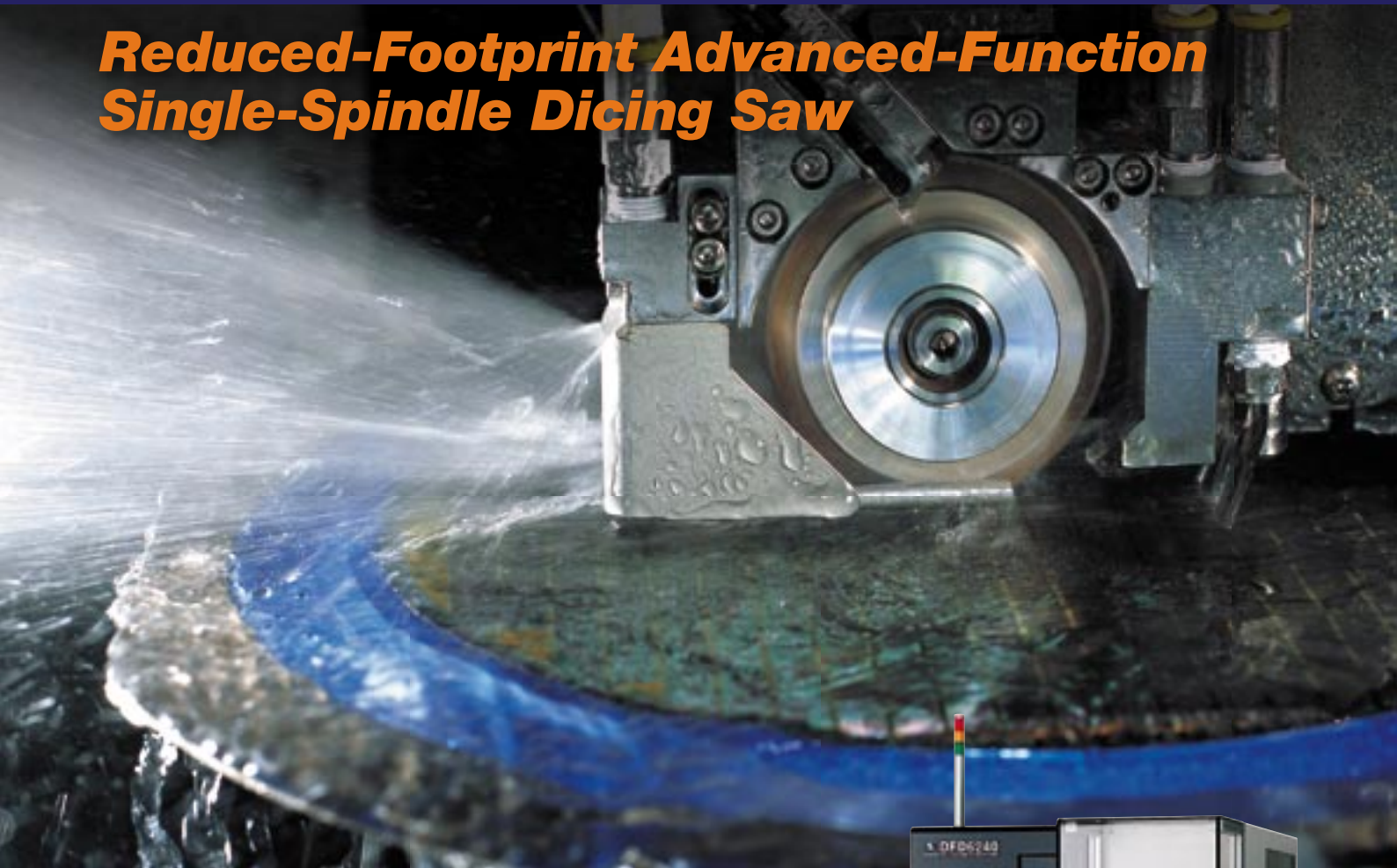


Fully Automatic Dicing Saw

DFD6240

Reduced-Footprint Advanced-Function Single-Spindle Dicing Saw



Disco 6000 Series Features and Performance

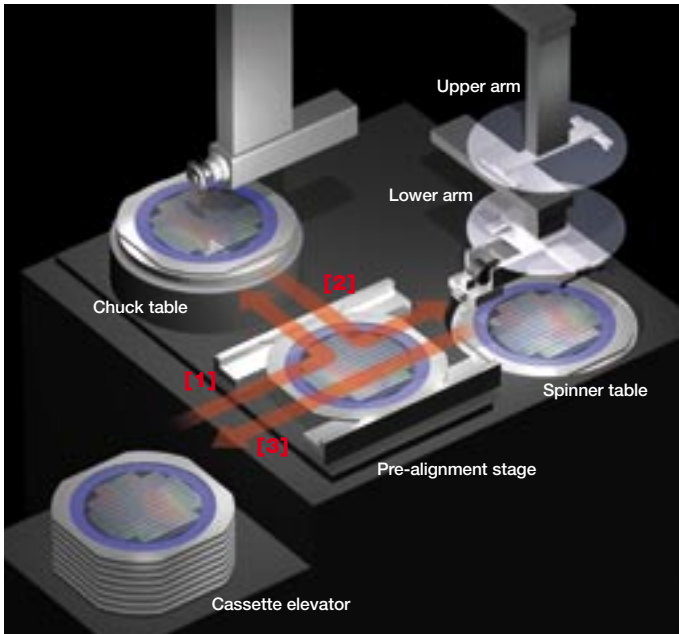
DFD6240 features the advanced functions and spindle lineup of the Disco 6000 series-technology proven at installations around the globe. This 200 mm single-spindle dicing saw is an excellent choice for dicing silicon and compound semiconductors, as well as for cutting and grooving ceramics, glasses, and other electronic and optical materials.

Factory-Friendly Design

- DFD6240's rigid, compact frame and improved wafer handling system contribute to its extremely small footprint of (20 % less than DFD641).
- Reduced energy and air consumption contribute to lower running cost and environmental impact.
- Condition monitor relays processing status and key machine information in real time for use in machine inspections and process management.



Fully Automatic Dicing Saw DFD6240



DFD6240 Workpiece Flow System

- [1] Lower arm moves workpiece from cassette to pre-alignment stage. Lower arm moves workpiece to chuck table → **cutting** →
- [2] Upper arm moves workpiece to spinner table → **cleaning and drying** →
- [3] Lower arm returns workpiece to cassette

Improved Usability

- Spindle shaft-lock feature and auto-open/close wheel cover (accessible from machine front) make blade changes easy and quick.
- Touch-panel display supports an easy-to-use graphical user interface.

Higher Throughput

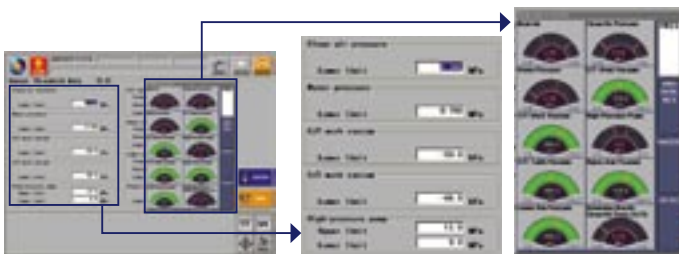
Increased speed ranges and return speeds for machine axes contribute to improved dicing throughput.

Improved Cut Quality

DFD6240 offers highly consistent and dependable cut quality through the new Synchro Spindle™ featuring superior radial rigidity. The coolant water flow rate controller, programmable via the touch-panel display, sets the flow rate for each process recipe. Atomizing nozzle technology (option, patented in USA, Japan, and other countries) is available for the wheel cover, where it effectively reduces particle adhesion, as well as for the spinner cleaning unit, where it yields exceptionally clean wafers after dicing.

Spindle Lineup

- Newly developed 1.2 kW spindle (standard) features superior rigidity.
- Center thrust design gives 1.8 kW spindle (option, uses 2" blades) and 2.2 kW spindle (option, uses 3" blades) extra rigidity for processing glasses, ceramics, and other high-load materials.



LCD touch screen

Control screen

DFD6240 Specifications

Workpiece Size	-	ø8"
X-axis	Cutting range	mm 210
	Max. rotating speed	mm/s 0.1 - 600
Y-axis	Cutting range	mm 210
	Index step	mm 0.0001
	Index positioning accuracy	mm 0.003/210
		mm (Single error) 0.002/5
	Scale resolution	mm 0.0001
Z-axis	Max. stroke	mm 19.22 (for ø2" blade)
	Moving resolution	mm 0.00005
	Repeatability accuracy	mm 0.001
	Max. blade size	mm ø58 (for 1.2 and 1.8 kW spindles)
θ-axis	Max. rotating angle	deg 380
	Spindle	Output
Rated torque		N·m 0.19
Revolution speed range		min ⁻¹ 6,000 - 60,000
Applicable Tape Frame	-	2-8-1
Utilities	Power supply	- 200 ~ 240 V AC±10 % 3-phase (without transformer)
		380 ~ 415 V AC±10 % 3-phase (with transformer)
Power consumption		
	When processing	kW 1.5(for reference)
	During warm-up	kW 1.0(for reference)
Max. power	kVA	4.9
Air pressure	MPa	0.5 - 0.8
Air max. consumption	L/min(ANFR)	250
Clean air pressure	MPa	0.5 - 0.8
Clean air max. consumption	L/min(ANFR)	243
Cutting water, spinner cleaning water, water curtain		
	Water pressure	MPa 0.2 - 0.4
	Water flow rate	L/min 8
Cooling water		
	Water pressure	MPa 0.2 - 0.4
	Water flow rate	L/min 1.5
Exhaust duct capacity	m ³ /min	5.0
Machine dimensions (W x D x H)	mm	900 x 1,190 x 1,800
Machine weight	kg	Approx. 1,200 (without transformer for overseas use)
		Approx. 1,280 (with transformer for overseas use)

Environmental conditions

- Use clean, oil-free air at a dew point of -15 °C or less. (Use a residual oil: 0.1 ppm. Filtration rating: 0.01 μm/99.5 % or more).
- Keep room temperature fluctuations within ±1 °C of the set value. (Set value should be between 20 - 25 °C).
- Keep cutting water and cleaning water 2 °C above room temperature (fluctuations within ±1 °C).
- Keep spindle cooling water the same as room temperature between 20 - 25 °C (fluctuations within ±1 °C).
- The machines should be used in an environment, free from external vibration. Do not install machine near a ventilation opening, heat generation equipment or oil mist generating parts.
- This machine uses water. In case of water leakage, please install the machine on the floor with sufficient waterproofing and drainage treatments.
- All pressures specified above are gauge pressures.
- As the above specification may change due to technical modifications. Please confirm when placing your order.
- For further information, please contact your local sales representative.

DISCO



ASIA :
DISCO HI-TEC (SINGAPORE) PTE., LTD.
Blk 2 Kaki Bukit Ave.1 #03-06/08 Kaki Bukit
Industrial Estate Singapore 417938
Phone:65-6747-3737 Fax: 65-6745-0266

DISCO HI-TEC (MALAYSIA) SDN. BHD.
Phone:60-3-8024-6588 Fax:60-3-8024-1311
Penang Regional Office

Phone:60-4-644-5502 Fax:60-4-645-2285
DISCO HI-TEC (THAILAND) CO., LTD.
Phone:66-2-6188441 Fax:66-2-6188440

DISCO TECHNOLOGY (SHANGHAI) CO., LTD.
Area E, 3rd Floor, Building A1 No.381 FuTeXiYi Road,
WaiGaoQiao Free Trade Zone Shanghai, P. R. China 200131
Phone:86-21-5866-2516 Fax: 86-21-5866-2517

ASIA AGENT :
New Tronics Co., Ltd.
Flat F, 11/F, Valiant Ind. Bldg. 2-12 Au Pui Wan Street,
Fotan Shantin, N.T. HONG KONG
Phone:852-26671431 Fax: 852-26874283

Happy Pole, Ltd.
8th floor, B-1, No.41 Section 2, Roosevelt Road Taipei,
Taiwan R.O.C.
Phone:886-22-3960651 Fax: 886-22-3943943

Aurotech Systems(Phil's), Inc.
121 Buencamino Street Alabang, Muntinlupa PHILIPPINES
Phone:63-2-809-0155 Fax: 63-2-807-7419

D.I. Corporation
D.I. Building 58-6 Nonhyun-Dong Kangnam-ku, Seoul KOREA
Phone:82-2-549-5501 Fax:82-2-3446-8087

U.S.A. :
DISCO HI-TEC AMERICA, INC.
3270 Scott Blvd. Santa Clara, CA 95054-3011 U.S.A.
Phone:1-408-987-3776 Fax:1-408-987-3785

Eastern Regional Sales & Service Office
Phone:1-603-656-9019 Fax:1-603-656-9018
Southeastern Regional Sales & Service Office
Phone:1-919-468-6003 Fax:1-919-468-6004
Central Regional Sales & Service Office
Phone:1-972-267-9500 Fax:1-972-267-5612

Southwestern Regional Sales & Service Office
Phone:1-602-431-1412 Fax:1-602-431-1437
Northwest Regional Sales & Service Office
Phone:1-503-644-0323 Fax:1-503-643-8108

EUROPE :
DISCO HI-TEC EUROPE GmbH
Liebigstrasse 8 D-85551 Kirchheim b.Muenchen Germany
Phone:49-89-90903-0 Fax:49-89-90903-199

DISCO HI-TEC FRANCE SARL, Provence Head Office
Phone:33-442-910020 Fax:33-442-910029

DISCO HI-TEC U.K. LTD.
Phone:44-1342-313165 Fax:44-1342-313177
DISCO HI-TEC MOROCCO SARL
Phone:212-6-136-94-04 Fax:212-22-97-38-88

DISCO CORPORATION

13-11 Omori-Kita 2-chome, Ota-ku, Tokyo 143-8580, Japan
Tel:03-4590-1100 Fax:03-4590-1075 • www.disco.co.jp